



MALLS



INFRASTRUCTURE



HOTELS



HOSPITALS

# EXTRA LOW VOLTAGE DIVISION

**PRE QUALIFICATION FILE**



**Schneider**  
Electric

## BTU METERING SYSTEM



---

## TABLE OF CONTENTS

---

1. About Extra Low Voltage Division
2. Quality Plan for Extra Low Voltage Division
3. Products
  - a. Building Automation / Building Management System
  - b. CO Monitoring System
  - c. Metering System (BTU, Water Meters, etc.)
  - d. Air Curtains
4. ELVD Scope of Works
  - a. ELVD Organizational Chart
  - b. Sales and Marketing
  - c. Contacts
  - d. Tender / Estimation
  - e. Design
  - f. Project Execution
  - g. Installation, Testing and Commissioning
  - h. Warranty and Certificates



---

## TABLE OF CONTENTS

---

### 5. BMS Integration

- a. Diagram
- b. BMS Integration for AX Arena Typical Architecture
- c. Direct Digital Controls (DDC)
- d. DDC Excel Web Controller at Chiller Yard Integrated to BMS
- e. FCU, Field Devices Integrated to BMS
- f. Water Meter Integration to BMS
- g. Air Curtain Integration to BMS

### 6. Project References

### 7. Major Executed Projects

## 1. ABOUT EXTRA LOW VOLTAGE DIVISION

---

Verger Delporte UAE Ltd has been operating in UAE since 1977 and have developed extensive experiences in many fields (i.e., Switchgear, IT, Trading, Contracting and EXTRA LOW VOLTAGE DIVISION “ELVD” ). Verger’s Extra Low Voltage Division is one of the Partners of Honeywell, Schneider Electric and Distributor of BTU, Electrical, Water Metering System.

Extra Low Voltage Division is specialized in the Supply, Engineering, Supervision, Installation and Testing and Commissioning for Building Management System (BMS), Metering System, CO Monitoring System and other services involving System Integration.

We adhere to the highest standards of corporate governance by establishing processes and practices that promote and ensure integrity, compliance and accountability.

Configured and manned to suit at best to an ever-changing market demand, this division relies on:

- A proficient office personnels (Manager, Engineers, Designers, etc.) whose natural skills stemming from a solid educational background and enhanced by a sharp knowledge of site, acquired by experience.
- Professional teams of well-trained technicians, chargehands and site engineers, earnestly carrying out all types of Extra Low Voltage System site duties, performing often praised quality jobs and services thanks to a high workmanship.
- Active coordination between clearly defined sections actually customer-oriented, is a clue to clients’ and employees’ satisfaction. The *Extra Low Voltage Division Managers* see to the productive and reliable operating of the Managers under his fold, while in turn, the Managers looking after various discipline keep a close eye on their fellow members to complete the jobs assigned in a professional way fulfilling the project requirements and at the same time exceeding the client’s expectation.



---

## 2. QUALITY PLAN

---

Scope: **Supply and Engineering of BMS and other Extra Low Voltage Products**

Striving to be always at the edge, in this relentless business sector, the company had to lay down sound foundations before setting its organization in an ever –improving quality drive.

Internal organization in business key-processes to meet Project's Quality requirements.

### 1. Marketing & Business Development:

- Working with MEP contractors, Consultants and end users offering quotations and writing specifications as well as offering budget quotations when required.
- To coordinate with the management and other department in all respects collecting market information and future planning.

### 2. Upon Project Allocation:

Prior to the acknowledgment of order, under the responsibility of ELVD Manager –

- To check that Verger's offer / proposal meet the clients' requirements in all aspects.
- To ensure that the agreed technical submittals / scope of works remain within our capacity.

### 3. Project Process:

Once the order is accepted, the Engineering Section shall make a technical submittal in accordance with the consultant's requirements and specifications.

On receipt of any comment or design changes, the submittal shall be changed in line with the specifications and in line with the project costing.



## 2. QUALITY PLAN

### 4. Design Engineering:

Under the supervision and direction of ELVD Manager / Operations Manager, to plan adequately the tasks and their related human and material/equipment resources as per contractual date of delivery.

- Design, material selection with optimal time margin to customers' approval.
- To carry out the design (i.e., schematic, riser, etc.) followed by general arrangements BMS systems integration, etc.
- The thoroughly reviewed and approved "design output" depends on initial control of the "design input" (Specifications, technical guides from the consultant, international and local standards, tailor-made software).
- Material procurement and execution.
- Testing and Commissioning.

### 5. Material Control: *(Refer to GP6 – Purchasing and Material Control Procedure)*

- **Selection** – Under the responsibility of competent personnel.

To choose materials required and/or requested by/from the clients and Verger's list of approved suppliers (Quality, Health, Safety and Environmental performance), the right materials complying with the specifications and applicable quality standards.

- **Purchasing** –

To place the corresponding order, thoroughly reviewed and approved by ELVD Manager.

- **Incoming Goods Inspection:**

Under the responsibility of Engineering Section to check materials in compliance with the specified requirements.

- **Delivery** –

Delivery notes or Invoices are prepared and material is sent to the site or to the control Panel manufacturers for incorporation into relevant Control Panels where required. All documentation recorded and filled up.

## 2. QUALITY PLAN

---

### 6. Execution: *(Refer to HSIM 6301)*

- Under the Supervision of the Operations Manager, the projects engineer will liaise with the MEP contractor and Consultant through drawings or on site coordination indicating the correct installation of the components where required and adopting the correct procedures for installation.
- After installation of all materials and checking by the projects engineers, the commissioning will start and the complete system will be put into correct operation.

### 7. Site Hand-over / Maintenance period:

Under the control of the Testing & Commissioning Manager -

- To hand over a comprehensive quality documentation with a view to provide essential instruction for site operating / preventive maintenance / troubleshooting.
- Follow up for a Maintenance contract after handling over of the project if required.

### 8. Project's Documents Control: *(Refer to GP1 – General Documents Control)*

Under the shared responsibility of the different section head:

- To record, file, update, withdraw and supersede the project-relate documents, when necessary, as per their relevance and importance with regard to quality requirements.
- To make information easy to retrieve, using electronic (diskettes, hard-disks) or paper support, where applicable.



### 3. PRODUCTS

“Supply and/or Installation”

*Controls, Automation & BMS and Metering System (Low Voltage); Total: 24+ Engineers including technicians.*



**Partner**



**Partner**



**AMR Provider  
System Integrator**





### 3. PRODUCTS

---

#### A. Building Automation / Building Management System:

- DDC Controls and Panels
- Integrated Room Controls (FCU & Valve Controls)
- Symmetre BMS Software
- AX (Hawk) integration controllers
- AX integration Platform (Hardware and Software)
- Energy Management Software modules

#### Field Devices:

- Valves/Actuators
- Frequency Inverters
- LON Field Devices
- Thermostats
- Sensors
- Humidistats
- Damper Actuators (Fire & Smoke and Direct Coupled)
- Pneumatic Controls

#### Thermostat & Room Control:

- Electronic & Electro-Mechanical Thermostats
- Room Controllers for Commercial Buildings
- DX and Package unit Thermostat (wired and wireless)

#### B. CO Monitoring System

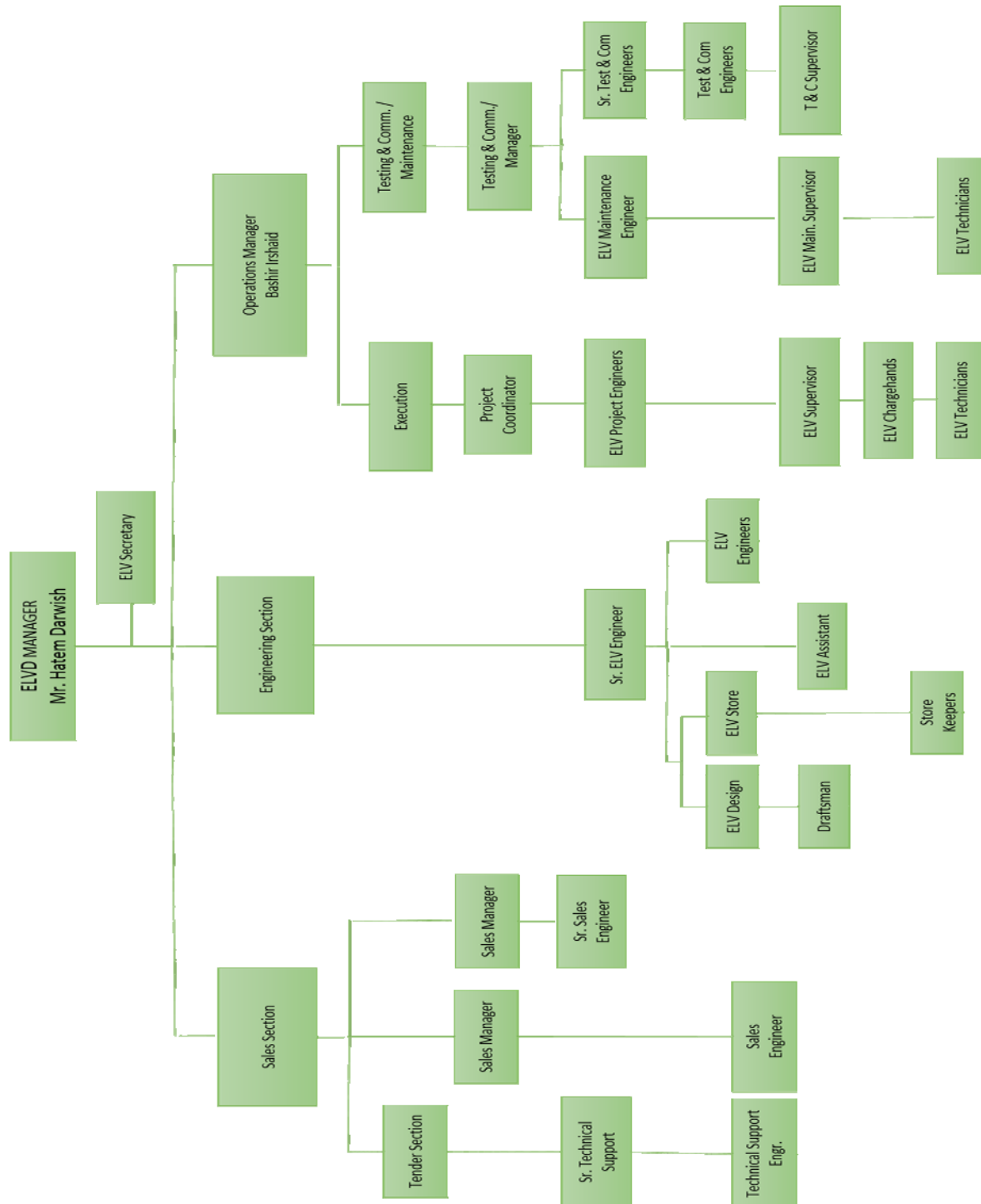
#### C. Metering System (BTU, Water Meters, etc.)

#### D. Air Curtains



## 4. EXTRA LOW VOLTAGE DIVISION – SCOPE OF WORKS

### 4A. ELVD – ORGANIZATIONAL CHART



## 4B. SALES AND MARKETING

---

Entrusted to Sales Manager – Projects Development, who closely coordinates with his Division Manager the duties require a clever knowledge of the market and its related chain of decisions: end users, local authorities, consultants, main contractors, et. al.

With a view to ensure a strong and lasting presence in the whole of the Emirates, thanks to a sound, professionals, accessible, highly responsive and trustworthy representatives, *Verger Delporte UAE Ltd* has established this outpost with a base in Sharjah, UAE, and covering the whole of the Emirates.

From the initial contacts set with customers up to the internal contract review, the *Sales Manager – Projects Development* will acts as facilitator, striving to get the best level of understanding between the two parties, ultimately bound by a flawless contract within proven Verger Delporte's capability.



## 4C. Contacts

- 1. Mr. Hatem Darwish**  
*Manager*  
Extra Low Voltage Division  
P.O. Box 5629 Sharjah, UAE  
Tel. : +971 6 5432436  
Fax : +971 6 5434139  
Mobile: +971 50 9427956  
E-mail : [hatem.darwish@verger-delporte.ae](mailto:hatem.darwish@verger-delporte.ae)
- 2. Ms. Eden de Guzman**  
General Coordinator/Secretary  
Extra Low Voltage Division  
Tel. : +971 6 5432436 ext. 310  
Fax : +971 6 5434139  
E-mail: [eden@verger-delporte.ae](mailto:eden@verger-delporte.ae)
- 3. Ms. VERGER DEL PORTE UAE LTD**  
Electrical & Mechanical Contracting, Switchgear Manufacturing  
Trading, Information Technology & Extra Low Voltage Division  
Tel. : +971 6 5432436  
Fax : +971 6 5434139  
Website: [www.verger-delporte.ae](http://www.verger-delporte.ae)

## 4D. Tender / Estimation

---

Under the coordination and responsibility of a qualified engineers, a sound and confident business approach to get the best technical solutions, devised with the overriding concern of meeting client's needs.

The experienced Technical Engineers have been trained to design the various systems in accordance to the details available in the Tender specifications.

Always on a technological watch, the engineers strive to make the client's benefit by adopting the latest state of art technology by introducing new advanced system.

Worked out in close conjunction with the other sections, if required. The **offers** subsequently **checked by the management to ensure its relevance and suitability.**

## 4E. Engineering and Design

---

Thoughtfully entrusted to a qualified Design team with a view to preserve the best of specialized competencies and foster maximum creativity.

The Main Activities carried out are the following:

1. Detailed Engineering
2. Graphical Programming
3. In house real time Programming

A well developed Engineering Workshop with latest state of art Demo set up helps the Design Engineers to perform the programming and sequential checking of the operation before being transferred to the Execution Engineers. This helps in avoiding the delays in the projects where in single Engineer carrying out the complete Job Distribution of the Works speeds up our output time and Quality.

From the initial job assignments, optimally planned within the general time schedule, the project joint works are all the more facilitated that the designers carry out their duties in a single room, comfortably air-conditioned and economically furnished.

The Shop drawings and the Riser Drawings performed under the latest widely coveted AutoCAD software.

With the latest technology at hand, the sections' output has substantially gained in **productivity, quality** and **reliability**, giving nothing but entire satisfaction to the customers.

## 4F. Project Execution

---

Adequately programmed from a collaboration of all the parties (*Tender Section, Engineering Section, and Logistical Support Section of the Administration Department and Site teams*), which produces a collection of expert advises, the project is entrusted to an Experienced *Execution Engineer*, under the overall supervision of the Operations Manager and Testing and Commissioning Manager coordinating with the Manager-Projects for site activities reporting back to the Manager Extra Low Voltage Division.

Drawings and materials approval by the consultant stand for the starting point of the related site works, to be executed, tested, commissioned, and handed over to the client, within the allotted time.

Suitably manned as per the updated workload, the site is initially organized according to the specificity of the job, hierarchical levels optimized in order to get the best output from a responsible and earnest personnel.

Current site competencies and resources can be described as follows:

- *Operations Manager* on assignment, exercising functional responsibilities,
- Incumbent *Site Engineers*, guiding *ELV Supervisors*,
- Safe and well-suited transport and handling means, carefully controlled quality tools and electrical appliances, make up actual conditions for a quality and productive job on site, source of satisfaction from the contractor to the end user.



## 4G. Installation, Testing and Commissioning

Clearly of outstanding concerns for the consultant, main contractor or end user, the Final visual inspection, Pre-commissioning, Commissioning duties are entrusted to duly Factory Trained Engineers, certified by our Principle Manufacturers for specific type of Systems.

These Engineers will coordinate with the contractor to Install the system as per the project specification requirement. Upon completion of the Installation, they perform the Pre-commissioning works followed by the commissioning of the Installed system.

Operations Manager and Testing & Commissioning Manager keep a close track on the site activities and provide his value added suggestions and help for the proper completion of the Job.

What evidence could we provide to a customer or any third party, likely but legitimately concerned of our delivery's conformance to his specified requirements and other applicable standards?

Proper Quality Records are just thoroughly maintained for that very purpose. They bear written trace of all the actions that directly or indirectly affect the quality of product and service delivered to the customer: Inspection, Pre-commissioning reports and Commissioning reports.

Finally, the client is given an Operation and Maintenance Manual, where he will find all relevant information necessary to a safe and efficient operating of the installed system.

Below are the following important matters being discussed during the testing and commissioning:

- Introduction and Scope
- Location of Activity
- Method and Procedure
- Responsibilities
- Tools/Equipment
- Health and Safety
- Test Sheets





---

## 4H. WARRANTY PERIOD / MAINTENANCE

---

With the warranty period stipulated by the contracts (a defined period from the site hand over), the customer can call anytime for Verger Delporte's intervention, provided the issue prior assessment confirms it is in our scope of work.

An experienced team, equipped with proper tooling and / or instruments, conduct then the required maintenance, using the already released instructions and Maintenance Manual.

A Maintenance Contract will be offered to the client when it is necessary.



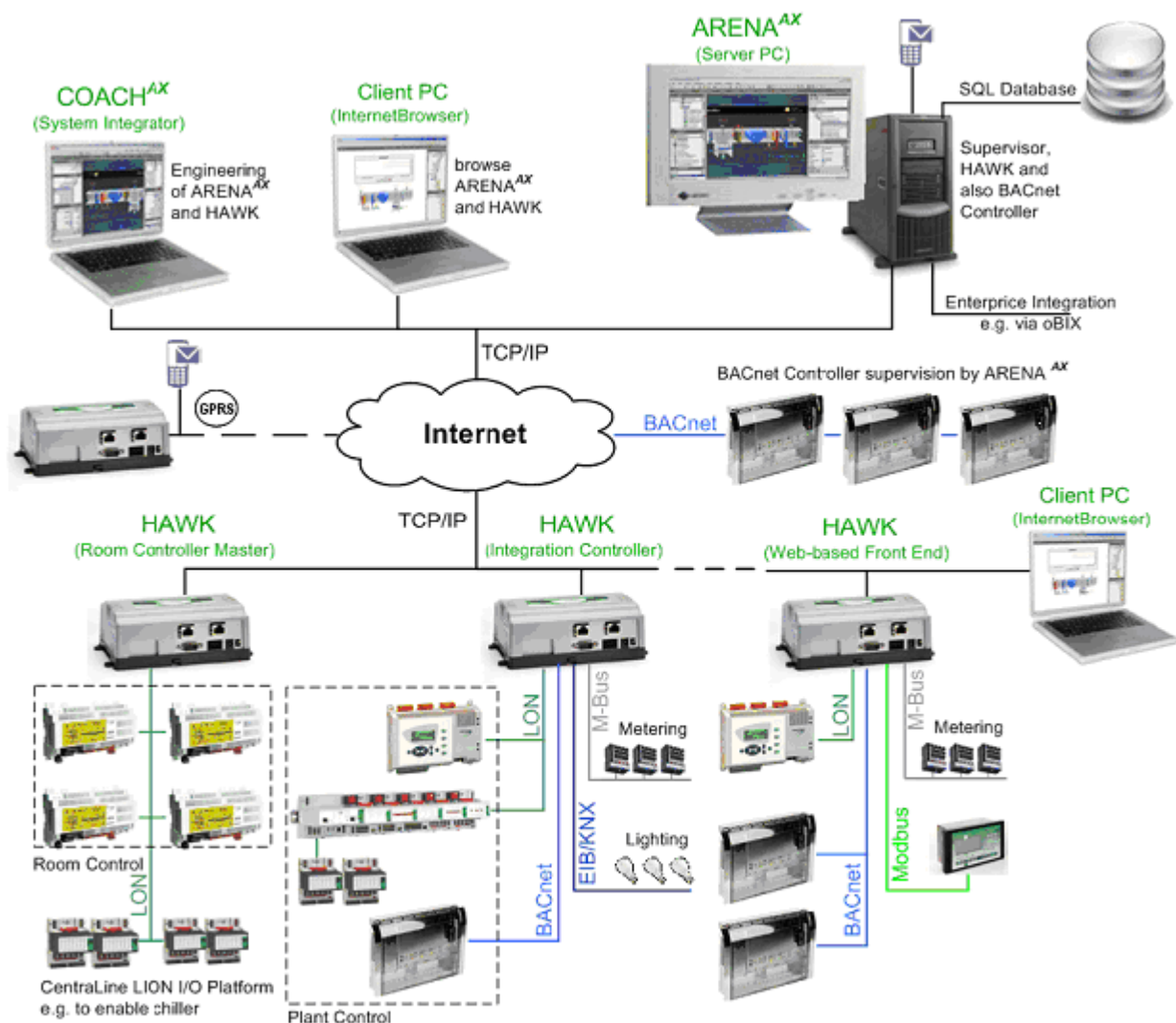
## 5. BMS INTEGRATION

### 5A. Diagram





## 5B. BMS Integration for AX Arena Typical Architecture





## 5C. Direct Digital Controls (DDC)

### Direct Digital Controls (DDC)





## 5D. DDC Exel Web Controller at Chiller Yard Integrated to BMS

Supply , Programming and Testing Commissioning DDC Exel WEB Controller at Chiller Yard Integration to Building Management System.

### DDC EXCEL WEB CONTROLLER IN MAIN CONTROL CENTER PLANT ROOM





## 5E. FCU, Field Devices Integrated to BMS

Supply , Programming and Testing Commissioning FCU ( Fan Coil Unit )  
Controller Complete Function of all field devices Integration to Building  
Management System.

### FAN COIL UNITS WITH CORRESPONDING HONEYWELL CONTROLLER





## 5F. Water Meter Integration to BMS

Supply , Programming Testing and Commissioning Complete Water Metering System Integration to Building Management System.

### WATER METERING SYSTEM





## 5F. Water Meter Integration to BMS

### WATER METER REPORT SNAP SHOT FROM M-BUS GATEWAY

The screenshot shows the IZAR@CENTER 1.10 software interface. The title bar indicates 'Device Parameter: 2009-09-10'. A yellow status bar at the top right displays 'Success!'. The interface includes a left sidebar with device lists, a central configuration area for device parameters, and a data table at the bottom right.

**Device List (Left Sidebar):**

- Devices (total): 2
- 37997540, 37997540, Water
- 37997573, 37997573, Water

**Configuration Parameters (Center):**

- USB: 00004002
- Username: \*
- Password: \*
- ZVEI Opto Transceiver: 2400 Baud
- Current Address: 0
- New Primary Address: 0
- Broadcast Address: 254
- New Baudrate: 2400 Baud
- Primary Address: 1
- Secondary Address: 37997573

**Data Table (Bottom Right):**

Time point	Value	Unit
05/07/2011 10:31	37997573	Device Number
Hydrus Water	00	Device State
	13.049	Volume [m3]
	0.000	Volume [m3]
	0.000	Volume Flow [m3/h]
	010104	Operating Time [h]
	27.800	Flow Temperature [°C]
05/07/2011 08:58		Time Point [Date+Time]
	5.104	Volume [m3]
	0.000	Volume [m3]
31/12/2010		Time Point [Date]
31/12/2011		Time Point [Date]->Future Value





## 5G. Air Curtain Integration To BMS

Supply , Programming Testing and Commissioning Complete Air Curtain System Integration to Building Management System.

### AIR CURTAIN SYSTEM





## 5G. AIR CURTAIN





## 6. Project References

SR. NO	PROJECT NAME	PROJECT TYPE	PROJECT LOCATION	SYSTEM	CONSULTANT
1	General Hospital at Al Rahba - Female Ward	Hospital	ABU DHABI	Standalone Control	SEHA
2	General Hospital at Al Rahba - ICU Ward	Hospital	ABU DHABI	Standalone Control	SEHA
3	General Hospital at Al Rahba - Male Ward	Hospital	ABU DHABI	Standalone Control	SEHA
4	General Hospital at Al Rahba - Obygyne/Pediatric Ward	Hospital	ABU DHABI	Standalone Control	SEHA
5	Sheikh Khalifa Bin Zayed Hospital - Ajman	Hospital	AJMAN	iBMS	AJZ ENGR.
6	National Reference Laboratory Project	Laboratory	ABU DHABI	iBMS	AL HASHMI
7	National Reference Laboratory Project	Laboratory	ABU DHABI	Fume Hood Extract Fans	AL HASHMI
8	Masdar Mist 1A - Controllers	Laboratory	ABU DHABI	DDC Control	RWA - ARMSTRONG



## 6. Project References

S. NO	PROJECT NAME	PROJECT TYPE	PROJECT LOCATION	SYSTEM	CONSULTANT
9	Masdar Mist 1A - Controllers	Laboratory	ABU DHABI	DDC Control	RWA - ARMSTRONG
10	Masdar Mist 1A – Chiller Yard	Special project	ABU DHABI	DDC Control	RWA - ARMSTRONG
11	Masdar MIST 1A – Air Curtains	Special project	ABU DHABI	DDC Control	RWA - ARMSTRONG
12	Masdar MIST 1A – Fume Hood Extract Fans	Laboratory	ABU DHABI	Fume Hood Extract fans	RWA - ARMSTRONG
13	MIST 1A	Laboratory	ABU DHABI	Metering & Energy Monitoring	RWA - ARMSTRONG
14	Masdar Mist 1B	Laboratory	ABU DHABI	Metering & Energy System	RWA - ARMSTRONG
15	Masdar Mist 1B Air Curtain	Special project	ABU DHABI	DDC Control	RWA - ARMSTRONG
16	Masdar Mist 1C	Special project	ABU DHABI	Metering & Energy Monitoring	WSP
17	Indoor GO Karting	Special Project	DUBAI	BMS	BURTHILL



## 6. Project References

S. NO	PROJECT NAME	PROJECT TYPE	PROJECT LOCATION	SYSTEM	CONSULTANT
18	Ras Eng Proclad factory	Factory	RAS AL KHAIMAH	DDC Control	DIRECT FROM CLIENT
19	UAE Al Ain University	University	AL AIN	DDC Controls	AECOM
20	British Petrol	Oil & Gas	ABU DHABI	BMS	DIRECT FROM CLIENT
21	CML Industries	Factory	ABU DHABI	DDC Control	DIRECT WITH CLIENT
22	Saudi Arabia	DDC Control	SAUDI ARABIA	Oil and Gas	DIRECT WITH CLIENT
23	Dalma Gloria Hotel	Hotel	DUBAI	iBMS	NEB
24	Al Yassat Gloria Hotel	Hotel	DUBAI	iBMS	NEB
25	Nation Tower	Mall, Hotel & Residential	ABU DHABI	iBMS	KEO
26	Ritz Carlton Hotel	Hotel/Apartments	DUBAI	BMS	WSP
27	B +G+4 Bldg Emirates Garden	Residential	DUBAI	BMS	Conin Inc.



## 6. Project References

S. NO	PROJECT NAME	PROJECT TYPE	PROJECT LOCATION	SYSTEM	CONSULTANT
28	3B+G+4P+22 (Metropolis)	Commercial	DUBAI	BMS	LACAZA/HYDR O
29	JBR-Sheraton	Hotel	DUBAI	iBMS	ARENCO
30	Rotana Hotel - Fujairah	Hotel	FUJAIRAH	BMS	ACG
31	Arabtec New head Office	Commercial	DUBAI	BMS	DIRECT FROM CLIENT
32	DIP Head Quarters	Building	DUBAI	BMS	DEWAN
33	Dubai Silicon Oasis - Jade	Tower	DUBAI	BMS	LACAZA
34	Dubai Silicon Oasis - Coral	Tower	DUBAI	BMS	LACAZA
35	Dubai Silicon Oasis - Sapphire	Tower	DUBAI	BMS	LACAZA
36	Dubai Silicon Oasis - Ruby	Tower	DUBAI	BMS	LACAZA
37	Ajman Villa	Residential	AJMAN	BMS	DIRECT WITH CLIENT
38	MBG Laboratory at Za'beel	Laboratory	DUBAI	Pressure Control System	HIDI RAE



## 6. Project References

S. NO	PROJECT NAME	PROJECT TYPE	PROJECT LOCATION	SYSTEM	CONSULTANT
39	Fortress Compound – First Gulf Bank	Residential	ABU DHABI	BMS	DIRECT WITH CLIENT
40	IMPZ - Tower	Residential	DUBAI	BMS	bdpl Architects & Consul.
41	Express Hotel by Holiday Inn	Hotel	DUBAI	Lighting Control	NEB
42	Al Furjan Sales Center - Dubai	Villas	DUBAI	BMS	BURTHILL
43	Al Naeem Mall at RAK	Mall	RAS AL KHAIMAH	BMS	RICE & PERRY
44	RAK Substation 400 KV	Special Project	RAS AL KHAIMAH	DDC Control	MOTT MACDONALD
45	RAK Substation 400 KV	Special Project	RAS AL KHAIMAH	DDC Control	MOTT MACDONALD
46	Expansion of 33kV Network in Western Region Madinat Zayed Substation	Special Project	ABU DHABI	DDC Control	PB POWER
47	ICAD WEST Substation	Special Project	ABU DHABI	DDC Control	LAHMEYER INT'L



## 6. Project References

S. NO	PROJECT NAME	PROJECT TYPE	PROJECT LOCATION	SYSTEM	CONSULTANT
48	West Wharf Residential Tower	Tower	DUBAI	BMS	RMJM
49	Techload	Special Project	SHARJAH	Solar Energy; DDC Control	DIRECT WITH CLIENT
50	Mayfair Tower	Twin Tower	DUBAI	BMS & BTU Meters	HYDRO ENGR.
51	Appricot Tower	Tower	DUBAI	DDC Control	MEECON
52	Sub Station 4 at Saadiyat Island, Abu Dhabi	Special Project	ABU DHABI	DDC Control	MOTT MACDONALD
53	Sub Station 6 at Saadiyat Island, Abu Dhabi	Special Project	ABU DHABI	DDC Control	MOTT MACDONALD
54	Al Dahma Substation	Special Project	ABU DHABI	DDC Control	MOTT MACDONALD
55	Substation 3 at Saadiyat Island, Abu Dhabi	Special Project	ABU DHABI	DDC Control	MOTT MACDONALD





## 6. Project References

S. NO	PROJECT NAME	PROJECT TYPE	PROJECT LOCATION	SYSTEM	CONSULTANT
56	S3bstation 5 at Saadiyat Island, Abu Dhabi	Special Project	ABU DHABI	DDC Control	MOTT MACDONALD
57	Zabee'l Sports Club	Sports Complex	DUBAI	DDC Control	EO
58	Neopharma	Pharmaceutical	ABU DHABI	BMS	POYRY
59	Appricot Tower	Tower	DUBAI	CO System	MEECON
60	Dubai Investment Park New Head Office	Tower	DUBAI	BMS	DEWAN
61	Unibras – Fabtech	Factory	DUBAI	Green Building	DIRECT WITH CLIENT
62	Thales Project	Airport FZ	DUBAI	CCTV	DIRECT WITH CLIENT
63	Masdar MIST 1A – Water Meters	Laboratory	ABU DHABI	Metering & Energy Monitoring	RWA - ARMSTRONG
64	Guardian Tower	Tower	ABU DHABI	CO System	ERGA



## 6. Project References

S. NO	PROJECT NAME	PROJECT TYPE	PROJECT LOCATION	SYSTEM	CONSULTANT
65	Dubai Silicon Oasis Community Center	Sales Center	DUBAI	BMS	ARCH GROUP
66	Dome Tower	Tower	DUBAI	BMS	QHC
67	Novotel Hotel	Hotel	ABU DHABI	BMS	ACG
68	Ibis Hotel	Hotel	ABU DHABI	BMS	ACG
69	Botanica Tower	Tower	DUBAI	BMS	NEB
70	Botanica Tower	Tower	DUBAI	CO System	NEB
71	Al Bateen	Towers	DUBAI	Metering & Energy System	NEB
72	G+4 Labour Accommodation	Accommodation	DUBAI	DDC Control	AL AJMI
73	Meydan	Hotel	DUBAI	Hotel Mgnt. System	DIRECT WITH CLIENT



## 6. Project References

S. NO	PROJECT NAME	PROJECT TYPE	PROJECT LOCATION	SYSTEM	CONSULTANT
74	Presidential Palace	Palace	ABU DHABI	DDC Control	DIRECT WITH CLIENT
75	Dubai Land Project	Sales Center	DUBAI	HVAC Control	DIRECT WITH CLIENT
76	Sky News New Head Quarters	Special Project	ABU DHABI	BMS & Control Panel	NORR GROUP
77	Sorouh Tower	Towers	SHARJAH	BMS	TRILLIUM
78	Fujairah Commercial Complex	Mall	FUJAIRAH	BMS	ACG
79	Garhoud Hospital	Hospital	DUBAI	BMS	PIONEER ENGR.
80	Dubai Police	Government Building	DUBAI	BMS	NOVA
81	Construction of School - RAK	School	RAS AL KHAIMAH	BMS	DIRECT WITH CLIENT
82	Leaf Tower	Tower	ABU DHABI	BTU	E-TAN CONSUL.



## 6. Project References

S. NO	PROJECT NAME	PROJECT TYPE	PROJECT LOCATION	SYSTEM	CONSULTANT
83	Dubai Mall (Penguin chiller)	Mall	DUBAI	DDC Control	WSP
84	Dubai Mall Aquarium Modification	Mall	DUBAI	DDC Control	DIRECT WITH CLIENT
85	Oxford Tower	Tower	DUBAI	BMS	AREX
86	Yasmine Tower	Tower	RAS AL KHAIMAH	BMS	DIRECT WITH CONTRACTOR
87	Al Kasmi Hospital	Hospital	SHARJAH	BMS	DIRECT WITH CLIENT
88	Saraya Creek Tower	Tower	ABU DHABI	BTU	E-TAN CONSUL.
89	Construction of Secondary School for Girls	School	SHARJAH	BMS	DIRECT WITH CLIENT
90	C19 Capital Tower	Tower	ABU DHABI	BMS	AECOM
91	Capital Bay	Tower	DUBAI	BMS	ELEGANT CONSULTING ENGR.



## 6. Project References

S. NO	PROJECT NAME	PROJECT TYPE	PROJECT LOCATION	SYSTEM	CONSULTANT
92	Burlington Tower	Tower	DUBAI	BMS	NOVA
93	Airport Dubai T2	Airport	DUBAI	BMS SOFTWARE INTERFACE FOR PAS BET. T2 & T3	EDPI
94	Al Safouh Villa	Villa	DUBAI	BMS	ACG
95	Oceanic Hotel	Hotel	KORFAKHAN	BMS	DIRECT FROM CLIENT
96	Executive Bay Damac	Tower	DUBAI	BMS	ELEGANT CONSULTING ENGR.
97	Investment Bank Sharjah	Bank	SHARJAH	BMS	AL TERAZ
98	Sky News Arabia	TV Network	ABU DHABI	AMC	DIRECT WITH CLIENT
99	Dubai Studio	Studio	DUBAI	BMS	AECOM



## 6. Project References

S. NO	PROJECT NAME	PROJECT TYPE	PROJECT LOCATION	SYSTEM	CONSULTANT
100	Everest Factory	Factory	SHARJAH	BMS	PIONEER ENGR.
101	Oceana Penthouse	Penthouse	DUBAI	BMS	BLANCHARD
102	Ocean Scape	Residential	ABU DHABI	BTU	KHATIB & ALAMI
103	Res'l Tower @ DSO	Residential	DUBAI	BMS	ARCH GROUP
104	Neighborhood Retail Center – Discovery Garden	Mall	DUBAI	BMS	ARIF BINTOK
105	Neighborhood Retail Center	Mall	DUBAI	BMS	ARIF BINTOK



## 6. Project References

S. NO	PROJECT NAME	PROJECT TYPE	PROJECT LOCATION	SYSTEM	CONSULTANT
106	Residential Tower at DSO	Tower	DUBAI	BMS	ARCH GROUP
107	Lake Tower	Towre	DUBAI	BMS	NEB
108	Milleneum Golf Resort	Hotel	ABU DHABI	BMS	ACG
109	Exec. Bay on Plots BB.A05.039	Commercial	DUBAI	BMS	ENGR. CONSORTIUM
110	Gulf Data Center	Data Center	DUBAI	BMS	NOVA
111	Burj Damac 5	Hotel	DUBAI	BMS	LACAZA



## 6. Project References

S. NO	PROJECT NAME	PROJECT TYPE	PROJECT LOCATION	SYSTEM	CONSULTANT
112	Best Food Factory	Factory	DUBAI	BMS	SHAHID ENGR. CONSUL
113	Fujairah Commercial Complex	Mall	FUJAIRAH	BMS	ACG
114	Ruwais Refinery Extension	Refinery	ABU DHABI	BMS	ECG
115	Multi Use hall in Fujairah	Hall	FUJAIRAH	BMS	GOLDEN PLANNERS





## 6. Project References

S. NO	PROJECT NAME	PROJECT TYPE	PROJECT LOCATION	SYSTEM	CONSULTANT
116	Emaar Boulevard Restaurant	Restaurant	DUBAI	BMS	B.H.NS ENGR. CON.
117	Mina Al Fajer (Fairmont)	Hotel	FUJAIRAH	BMS	DCC
118	B+G+7 Hotel	Hotel	DUBAI	BMS	ATOZ
119	Sky Garden	Tower	ABU DHABI	BMS & BTU Meters	PIONEER ENGR.



## 6. Project References

S. NO	PROJECT NAME	PROJECT TYPE	PROJECT LOCATION	SYSTEM	CONSULTANT
120	Madaam Mosque	Mosque	SHARJAH	BMS	C.A.B. CONSUL.
121	Mushref Cooperative Mall	Mall	ABU DHABI	BMS	ELEGANT CONSULTING ENGR.
122	G+3 Residential Building @ Al Barsha	Residential	DUBAI	BMS	GLOBALTECH
123	AABar Tower	Tower	ABU DHABI	BTU	APG
124	Ambulatory Clinic	Clinic	AL AIN	BMS	SEHA



## 6. Project References

S. NO	PROJECT NAME	PROJECT TYPE	PROJECT LOCATION	SYSTEM	CONSULTANT
125	G+M General Clinic	Clinic	DUBAI	BMS	ORBIT ENGR.
126	Mixed Use Building in Dubai	Residential	DUBAI	BMS	BEL-YOAHAH
127	Sheraton Hotel	Hotel	DUBAI	BMS	TORONTEC
128	Chemical Ware house	Warehouse	DUBAI	BMS	SPEC



## 6. Project References

S. NO	PROJECT NAME	PROJECT TYPE	PROJECT LOCATION	SYSTEM	CONSULTANT
129	GSL Warehouse	Warehouse	DUBAI	BMS	WINNER CONSUL.
130	Najmat Residential	Residential	ABU DHABI	BMS, BTU	APG
131	Family Complex	Residential	DUBAI	BMS	ARCH DOME



## 7. Major Executed Projects

### TAKREER RUWAIS REFINERY – NON PROCESS BLDG.



Project Type :	Oil & Gas
Location :	Abu Dhabi
Client :	Ed Zublin
Scope :	BMS
Product :	Honeywell



## 7. Major Executed Projects

### DUBAI INVESTMENT PARK – HEAD QUARTERS, DUBAI



DUBAI INVESTMENT PARK - HEAD QUARTERS

Project Type :	Investment Park
Location :	Dubai
Client :	Dubai Investments
Scope :	BMS - AMC
Product :	Honeywell



## 7. Major Executed Projects

### DUBAI MALL, DUBAI



PROJECT TYPE`	:	Mall
LOCATION	:	Dubai
CLIENT	:	EMAAR
SCOPE	:	Building Management System/New Scope
PRODUCT	:	HONEYWELL



## 7. Major Executed Projects

### MASDAR CITY – ADB



Project Type :	University
Location :	Abu Dhabi
Client :	Al Andhimah
Scope :	BMS
Product :	Honeywell



MASDCAR CITY - ABU DHABI





## 7. Major Executed Projects

### DEIRA CITY CENTER, DUBAI



PROJECT TYPE	:	Mall
LOCATION	:	Dubai
SCOPE	:	Building Management System
PRODUCT	:	HONEYWELL



## 7. Major Executed Projects

### IBN BATUTTA MALL



PROJECT TYPE	:	MALL
LOCATION	:	Dubai, UAE
MEP CONTRACTOR	:	Conversion Electromecha
SCOPE	:	Building Management System
PRODUCT	:	HONEYWELL



## 7. Major Executed Projects

### ARABIAN RANCHES RETAIL CENTER



PROJECT TYPE`	:	Retail Center
LOCATION	:	Dubai
SCOPE	:	Building Management System
PRODUCT	:	HONEYWELL



## 7. Major Executed Projects

### ARABIAN RANCHES CLUB



PROJECT TYPE`	:	Club
LOCATION	:	Dubai
SCOPE	:	Building Management System
PRODUCT	:	HONEYWELL



## 7. Major Executed Projects

### AL NAEEM MALL, RAK



PROJECT TYPE	:	Mall
LOCATION	:	Ras Alkhaimah
SCOPE	:	Building Management System
PRODUCT	:	HONEYWELL



## 7. Major Executed Projects

### AL FURJAN NEIGHBORHOOD RETAIL CENTER, DUBAI



PROJECT TYPE	:	Retail Center
LOCATION	:	Dubai
CLIENT	:	Conversion
SCOPE	:	BMS
PRODUCT	:	HONEYWELL



## 7. Major Executed Projects

### NEIGHBORHOOD RETAIL CENTER, DUBAI



PROJECT TYPE :	Retail Center
LOCATION :	Dubai
CLIENT :	Conversion
SCOPE :	BMS
PRODUCT :	HONEYWELL

### DSO COMMUNITY CENTER, DUBAI



PROJECT TYPE :	Retail Center
LOCATION :	Dubai
CLIENT :	Efeco
SCOPE :	BMS
PRODUCT :	HONEYWELL



## 7. Major Executed Projects

### NEO PHARMA, ABU DHABI



Project Type :	Pharmaceutical
Location :	Abu Dhabi
MEP Contractor:	Al Shirawi
Scope :	BMS
Product :	Honeywell

### NATIONAL REFERENCE LABORATORY - ADB



Project Type :	Laboratory
Location :	Abu Dhabi
MEP Contractor:	Al Sabbah
Scope :	BMS
Product :	Honeywell





## 7. Major Executed Projects

### SHEIKH KHALIFA HOSPITAL - AJMAN



Project Type	:	Hospital
Location	:	Ajman
MEP Contractor	:	Strabag
Scope	:	BMS
Product	:	Honeywell



## 7. Major Executed Projects

### DAMAC HEIGHTS TOWER



PROJECT TYPE`	:	Tower
LOCATION	:	Dubai, Marina
SCOPE	:	Building Management System
PRODUCT	:	HONEYWELL



## 7. Major Executed Projects

### DAMAC TOWERS BY PARAMOUNT



PROJECT TYPE`	:	Tower
LOCATION	:	Dubai
SCOPE	:	Building Management System
PRODUCT	:	HONEYWELL



## 7. Major Executed Projects

### DAMAC OCEANSCAPE, ADB



PROJECT TYPE`	:	Tower
LOCATION	:	Abu Dhabi
CLIENT	:	DAMAC PROPERTIES
SCOPE	:	BTU METERING SYSTEM
PRODUCT	:	DIEHL - HYDROMETER



## 7. Major Executed Projects

### NATION TOWERS



NATION TOWERS - ABU DHABI

PROJECT TYPE`	:	Tower
LOCATION	:	Abu Dhabi
MEP CONTRACTOR	:	EFECO
SCOPE	:	BTU METERING SYSTEM/BMS
PRODUCT	:	DIEHL – HYDROMETER / HONEYWELL



## 7. Major Executed Projects

### SOROUH TOWER



PROJECT TYPE	:	Tower
LOCATION	:	Sharjah, Corniche
CONSULTANT	:	TRILLIUM
MEP CONTRACTOR	:	Thermo LLC
SCOPE	:	BMS & BTU METERING SYSTEM
PRODUCT	:	HONEYWELL / DIEHL
NUMBER OF POINTS	:	5,000



## 7. Major Executed Projects

### MARINA, DIAMOND 5 TOWER



PROJECT TYPE	:	Tower
LOCATION	:	Dubai, Marina
SCOPE	:	BTU Metering System
PRODUCT	:	Diehl Hydrometer

### MARINA, DIAMOND 6 TOWER



PROJECT TYPE	:	Tower
LOCATION	:	Dubai, Marina
SCOPE	:	BTU Metering System
PRODUCT	:	Diehl Hydrometer



## 7. Major Executed Projects

### NOVOTEL & IBIS HOTEL



NOVOTEL & IBIS HOTELS - ABU DHABI

PROJECT TYPE	:	Hotel
LOCATION	:	Abu Dhabi
CONSULTANT	:	ACG
MEP CONTRACTOR	:	Verger Delporte UAE Ltd.
SCOPE	:	Building Management System
PRODUCT	:	Honeywell
NUMBER OF POINTS	:	3,500 – Novotel 3,500 - Ibis





## 7. Major Executed Projects

### CAPITAL HOUSE TOWER



PROJECT TYPE	:	Tower
LOCATION	:	Abu Dhabi
MEP CONTRACTOR	:	Verger Delporte UAE Ltd
SCOPE	:	BMS
PRODUCT	:	HONEYWELL



## 7. Major Executed Projects

### NAJMAT RESIDENTIAL TOWER



PROJECT TYPE	:	Tower
LOCATION	:	Abu Dhabi
CONSULTANT	:	APG
MEP CONTRACTOR	:	ETTS
SCOPE	:	Building Management System
PRODUCT	:	HONEYWELL



## 7. Major Executed Projects

### Najmat Residential Tower, Plots C1 & C4, Al Reem Island



PROJECT TYPE	:	Tower
LOCATION	:	Abu Dhabi
CONSULTANT	:	Union National Bank/ Al Wifaq Abu Dhabi
MEP CONTRACTOR	:	Verger Delporte UAE Ltd
SCOPE	:	BMS
PRODUCT	:	HONEYWELL



## 7. Major Executed Projects

### CAPITAL BAY TOWER



PROJECT TYPE :	Tower
LOCATION :	Dubai, Business Bay
MEP CONTR :	SIGMA ENGINEERING LLC
SCOPE :	BMS
PRODUCT :	HONEYWELL

### EXECUTIVE BAY TOWER



PROJECT TYPE :	Tower
LOCATION :	Dubai, Business Bay
CONSULTANT :	Elegant Consulting Engr.
MEP CONT :	SIGMA ENGINEERING LLC
SCOPE :	BMS
PRODUCT :	HONEYWELL



## 7. Major Executed Projects

### LAKE TOWER



PROJECT TYPE :	Tower
LOCATION :	Dubai, Jumeirah
CONSULTANT :	NEB
MEP CONTR :	Radiant
SCOPE :	BMS
PRODUCT :	HONEYWELL

### AL MAMZAR TOWER, SHARJAH



PROJECT TYPE :	Tower
LOCATION :	Sharjah
SCOPE :	Building Management
System	
PRODUCT :	HONEYWELL



## 7. Major Executed Projects

### SKY GARDEN TOWER



PROJECT TYPE :	Tower
LOCATION :	Abu Dhabi
CONSULTANT :	Pioneer Engr.
MEP CON. :	Gulf Sail
SCOPE :	BMS
PRODUCT :	HONEYWELL

### AL BATEEN TOWERS



PROJECT TYPE :	Towers
LOCATION :	Dubai, JBR
CONSULTANT :	NEB
MEP CONT. :	Commodore Cont. LLC
SCOPE :	Metering & Energy System
PRODUCT :	Hydrometer



## 7. Major Executed Projects

### AABAR TOWER



PROJECT TYPE :	Tower
LOCATION :	Abu Dhabi
CONSULTANT :	APG
MEP CONT. :	Ecotherm
SCOPE :	BTU System
PRODUCT :	HYDROMETER

### BURLINGTON TOWER



PROJECT TYPE :	Tower
LOCATION :	Dubai, Bus. Bay
CONSULTANT :	Nova
MEP CONT. :	SIGMA ENGR. LLC
SCOPE :	BMS
PRODUCT :	HONEYWELL



## 7. Major Executed Projects

### METROPOLIS TOWER



PROJECT TYPE :	Tower
LOCATION :	Dubai, Business Bay Road
CONSULTANT :	Lacaza/Hydro
MEP CONT. :	THERMO LLC
SCOPE :	BMS
PRODUCT :	Honeywell

### JADE TOWER



PROJECT TYPE :	Tower
LOCATION :	Dubai, DSO
CONSULTANT :	Lacasa
MEP CONT. :	Omega Engr.
SCOPE :	BMS
PRODUCT :	Honeywell
No. of Points :	1,200





## 7. Major Executed Projects

### SARAYA CREEK TOWERS



PROJECT TYPE :	Towers
LOCATION :	Abu Dhabi
MEP CONT. :	Commodore Cont. LLC
SCOPE :	BTU System
PRODUCT :	HYDROMETER

### OAKWOOD TOWER



PROJECT TYPE :	Residential Tower
LOCATION :	Dubai, IMPZ Area
CONSULTANT :	bdpl Arch. & Consult.
MEP CONT. :	Omega Engineering
SCOPE :	BMS
PRODUCT :	Honeywell
No. of Points :	3,500



## 7. Major Executed Projects

### CORAL TOWER



PROJECT TYPE :	Tower
LOCATION :	Dubai, DSO
CONSULTANT :	Lacasa
MEP CONT. :	Omega Engr.
SCOPE :	BMS
PRODUCT :	Honeywell
No. of Points :	1,200

### SAPPHIRE TOWER



PROJECT TYPE :	Tower
LOCATION :	Dubai, DSO
CONSULTANT :	Lacasa
MEP CONT. :	Omega Engr.
SCOPE :	BMS
PRODUCT :	Honeywell
No. of Point :	1,200



## 7. Major Executed Projects

### RUBY TOWER



PROJECT TYPE :	Tower
LOCATION :	Dubai, DSO
CONSULTANT :	Lacasa
MEP CONT. :	Omega Engr.
SCOPE :	BMS
PRODUCT :	Honeywell
No. of Points :	1,200

### WEST WHARF TOWER

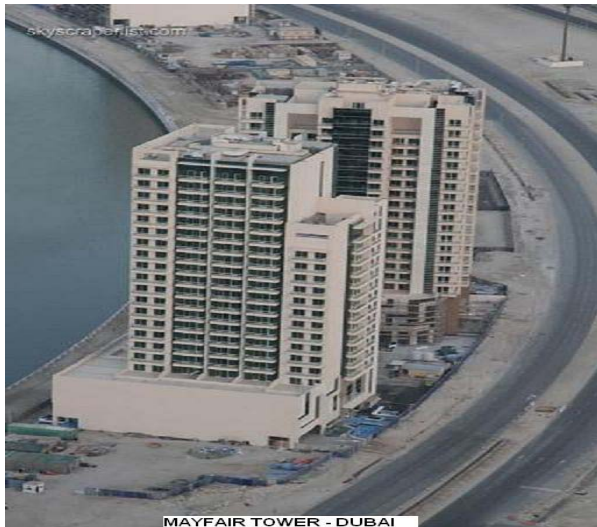


PROJECT TYPE :	Tower
LOCATION :	Dubai, Business Bay
CONSULTANT :	RMJM
MEP CONT. :	Omega Engr.
SCOPE :	BMS
PRODUCT :	Honeywell
No. of Points :	3,500



## 7. Major Executed Projects

### MAYFAIR TOWERS



MAYFAIR TOWER - DUBAI

PROJECT TYPE :	Twin Towers
LOCATION :	Dubai, Bus. Bay
CONSULTANT :	Hydro Engr.
MEP CONT. :	United Masters
SCOPE :	BMS
PRODUCT :	Honeywell
No. of Points :	3,500

### GUARDIAN TOWER



PROJECT TYPE :	Tower
LOCATION :	Abu Dhabi
CLIENT :	Guardian Towers Realty
CONSULTANT :	DYENA
MEP CONT. :	EFECO
SCOPE :	CO Monitoring System
PRODUCT :	Honeywell



## 7. Major Executed Projects

### DOME TOWER



PROJECT TYPE :	Tower
LOCATION :	Dubai, JBR
CONSULTANT :	NEB
MEP CONT. :	Radiant
SCOPE :	BMS
PRODUCT :	Honeywell

### ARBIFT TOWER



PROJECT TYPE :	Tower
LOCATION :	Dubai
MEP CONT. :	Verger Delporte UAE Ltd.
SCOPE :	BMS
PRODUCT :	HONEYWELL



## 7. Major Executed Projects

### LEAF TOWER



PROJECT TYPE :	Tower
LOCATION :	Abu Dhabi
CONSULTANT :	E-TAN CONSULTING
MEP CONT. :	Commodore Cont. LLC
SCOPE :	BTU Metering System
PRODUCT :	HYDROMETER

### OXFORD TOWER



PROJECT TYPE :	Tower
LOCATION :	Dubai
CONSULTANT :	AREX
MEP CONT. :	Sigma EngR. LLC
SCOPE :	BMS
PRODUCT :	HONEYWELL



## 7. Major Executed Projects

### TAJ HOTEL REFURBISHMENT - DUBAI



PROJECT TYPE	:	Hotel
LOCATION	:	Dubai, Deira
MEP CONTRACTOR	:	Khansaheb
SCOPE	:	Building Management System
PRODUCT	:	Honeywell



## 7. Major Executed Projects

### AL OSAIMI RESORT & RES'L APTS.



PROJECT TYPE`	:	Hotel, Resort & Apartments
LOCATION	:	Dubai
SCOPE	:	Building Management System
PRODUCT	:	HONEYWELL





## 7. Major Executed Projects

### SHERATON HOTEL, CREEK



PROJECT TYPE	:	Hotel
LOCATION	:	Dubai, Deira
CONSULTANT	:	Arenco
MEP CONTRACTOR	:	Diplomat
SCOPE	:	Integrated Building Management System
PRODUCT	:	Honeywell



## 7. Major Executed Projects

### JBR RAMADA PLAZA HOTEL



PROJECT TYPE	:	Hotel
LOCATION	:	Dubai, JBR
MEP CONTRACTOR	:	Thermo LLC
SCOPE	:	Building Management System
PRODUCT	:	HONEYWELL



## 7. Major Executed Projects

### MINA ALFAJER (FAIRMONT) HOTEL



PROJECT TYPE	:	Hotel
LOCATION	:	Fujairah
MEP CONTRACTOR	:	Menasco
SCOPE	:	Building Management System
PRODUCT	:	HONEYWELL



## 7. Major Executed Projects

### JBR HILTONPLAZA HOTEL

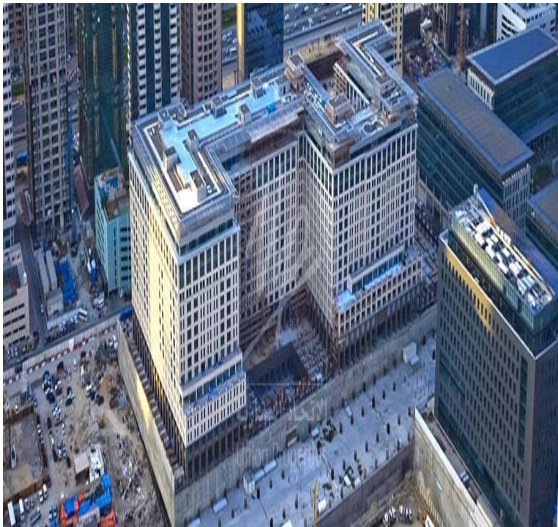


PROJECT TYPE	:	Hotel
LOCATION	:	Dubai, JBR
MEP CONTRACTOR	:	Thermo LLC
SCOPE	:	Building Management System
PRODUCT	:	HONEYWELL



## 7. Major Executed Projects

### RITZ CARLTON, DUBAI



PROJECT TYPE :	Hotel
LOCATION :	Dubai, JBR
MEP CONT. :	Thermo LLC
SCOPE :	BMS
PRODUCT :	HONEYWELL





## 7. Major Executed Projects

### DALMA GLORIA HOTEL



DALMA TOWER ( B+G+40 FLOORS)  
PLOT A-314.005, TECOM DUBAI MARCH 2005



PROJECT TYPE :	Hotel
LOCATION :	Dubai, Sheikh Zayed Road
CLIENT :	Gloria Hotels
CONSULTANT :	NEB
MEP CONT. :	Verger Delporte UAE Ltd
SCOPE :	IBMS
PRODUCT :	Honeywell
PROTOCOL :	BACnet
No. of Points :	10,000

### AL YASSAT GLORIA HOTEL



AL YASSAT TOWER ( G+40 FLOORS)  
PLOT C-201.055, TECOM DUBAI MARCH 2005



PROJECT TYPE :	Hotel
LOCATION :	Dubai, Sheikh Zayed Road
CONSULTANT :	NEB
MEP CONT. :	Verger Delporte UAE Ltd
SCOPE :	IBMS
PRODUCT :	Honeywell
No. Of Points :	10,500



## 7. Major Executed Projects

### APRICOT TOWER



PROJECT TYPE :	Tower
LOCATION :	Dubai, DSO
CONSULTANT :	MEECON
MEP CONT. :	Larsen and Toubro
SCOPE :	BMS
PRODUCT :	Honeywell
No. of Points :	3,500

### ROTANA BEACH RESIDENCE & HOTELS



PROJECT TYPE :	Hotel
LOCATION :	Dubai
SCOPE :	BMS
PRODUCT :	Honeywell



## 7. Major Executed Projects

### FUJAIRAH COMMERCIAL COMPLEX



PROJECT TYPE	:	Mall & Residences
LOCATION	:	Fujairah
MEP CONTRACTOR	:	ETA
SCOPE	:	Building Management System
PRODUCT	:	HONEYWELL